

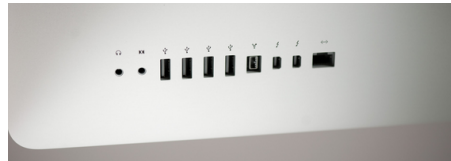
Epson 585wi

Interactive Tools Tutorial

Connecting to the projector-- Two options

Option A

1. Connect the USB cable from the projector to the USB port on the computer



2. You may be prompted to open and install the USB Display app the first time you plug into your computer. After that the app will start up automatically when you plug into your computer.



Option B

Connecting the projector to the computer over a network

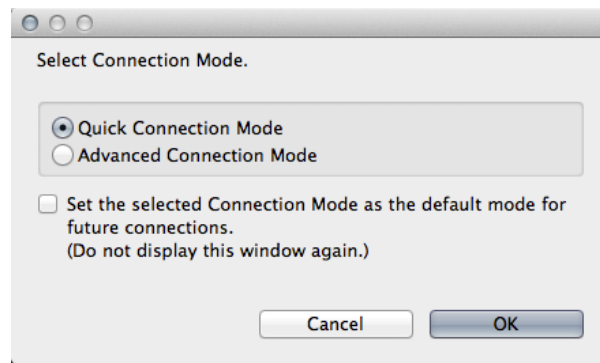


1. Turn the projector on and select LAN on the projector remote.

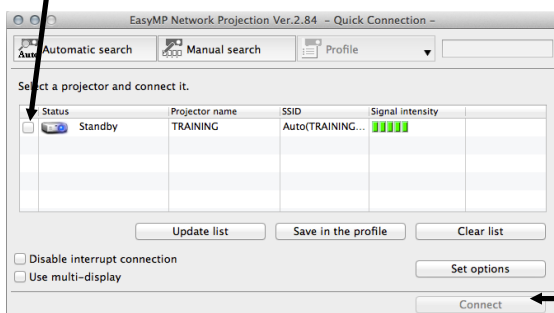
2. Open the Easy MP Network projection app.



3. A window opens up allowing you to connect. Select Quick or Advanced connection mode. click OK

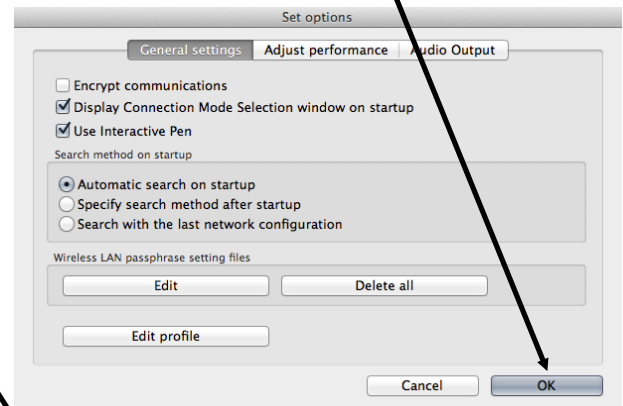


4. The projector should be listed. Click the box next to your projector.



5. Next click on Set options. You will see this screen:

6. Under general settings make sure the 2nd & 3rd boxes are checked. Click OK



7. Then click on Connect



8. The next step is to start the Easy interactive tools application on your computer. When it opens you will see the startup menu.

1. Desktop Annotation

Annotation mode starts and computer screen is displayed

2. New

Whiteboard mode starts

3. Open

Opens whiteboard files saved previously

4. Recent files

most recent file is opened

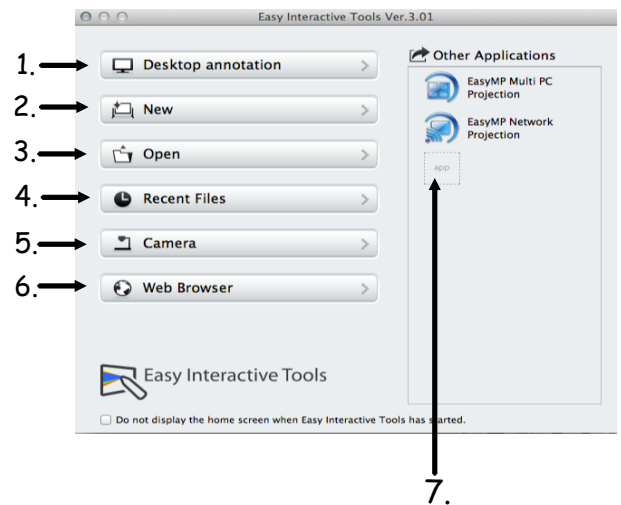
5. Camera

Annotation mode starts and image from the document camera is projected.

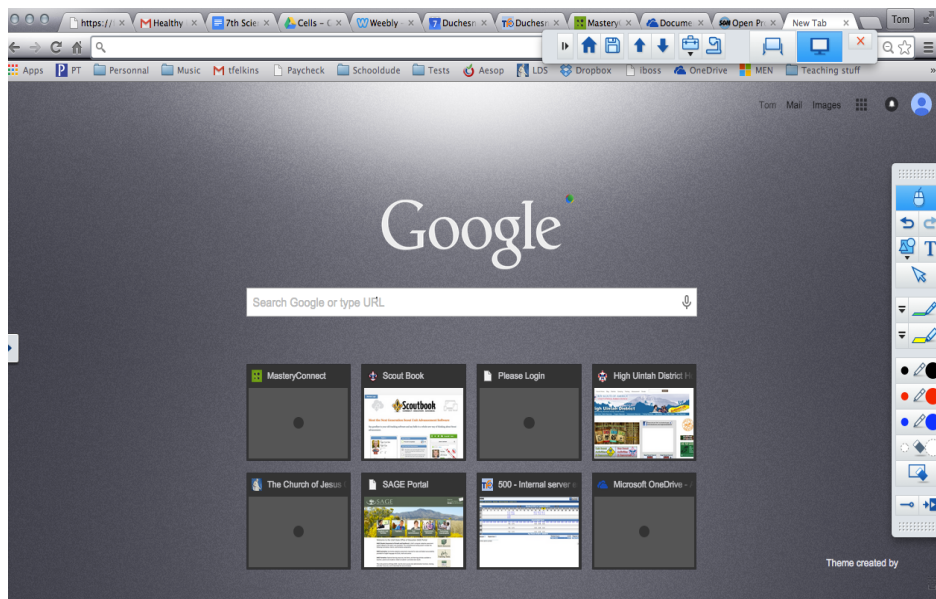
6. Web browser

7. Other Applications

Register up to six shortcuts for other applications. Drag and drop into the space.



When annotation mode is selected your desktop is shown. You can highlight, write on, surf the web, etc.....



Easy interactive tools

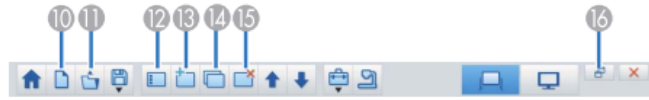
Command Toolbar--Allows you to change mode, save files, control connected devices, and change a variety of settings. These are available in annotation mode.

Annotation mode



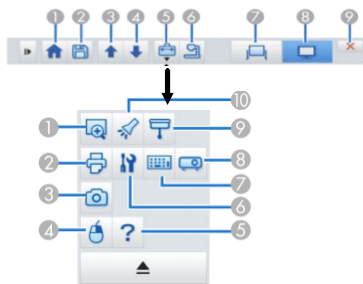
1. Home screen
2. Save file as pdf, png, jpg,eit
3. Page up
4. Page down
5. Other tools--more tool options
6. Camera--displays images from a document camera
7. Whiteboard mode
8. Annotation mode
9. Exit- Quits easy interactive tools

Whiteboard mode



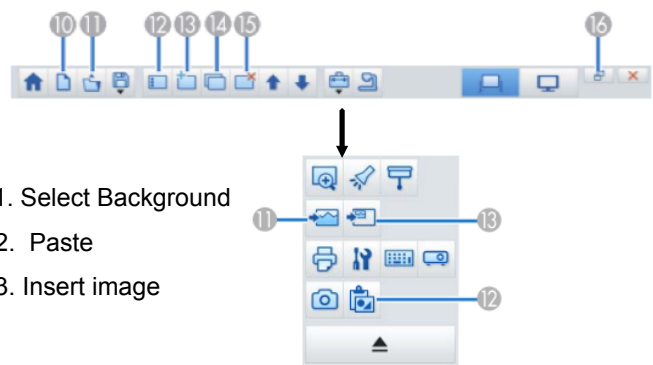
10. Creates a new file
11. Opens a previously saved file
12. Displays the page list screen
13. Adds a new page to the file
14. Duplicates the current page
15. Deletes the current page
16. Switches the drawing screen between full display and window display

Annotation Mode Toolbar



1. Enlarge the area
2. Print
3. Captures the currently displayed screen
4. Right click--only available in annotation mode
5. Help
6. Opens the settings screen
7. Input panel--displays a virtual keyboard on the screen
8. projector control
9. Covers the projected image with a shade
10. Spotlight-- emphasizes part of an image

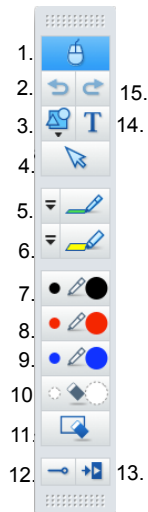
Whiteboard Mode Toolbar



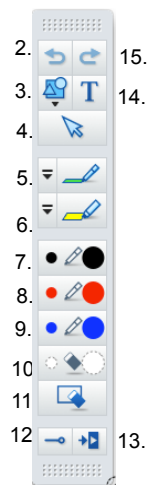
11. Select Background
12. Paste
13. Insert image

Drawing Toolbar Functions

Annotation Mode



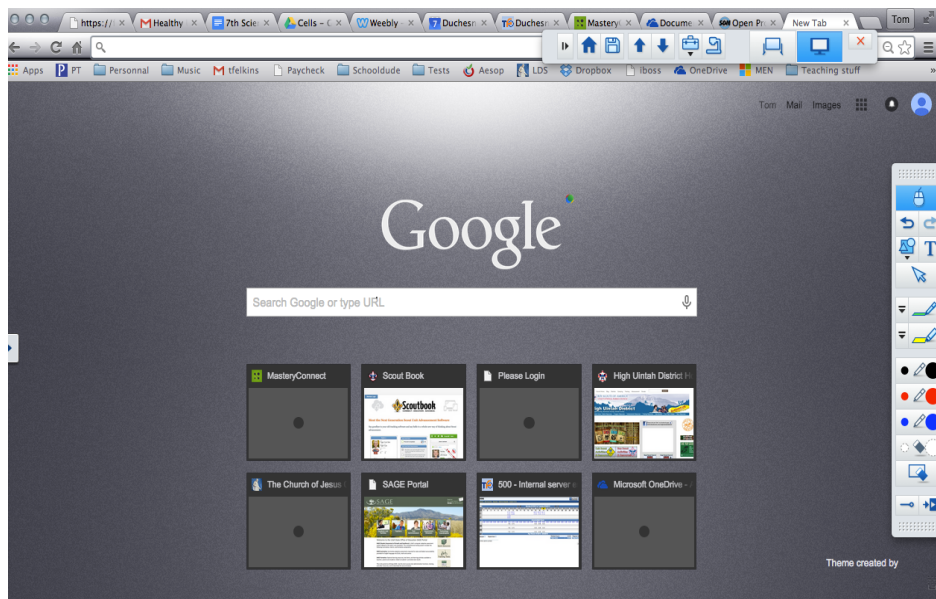
Whiteboard mode



1. mouse--use when your not drawing
2. undo
3. shapes--many to choose from
4. selector tool--selects drawn images or inserted images. Also lets you move images
5. Pen
6. highlighter
7. black pen--small circle means fine lines, big circle means fat lines.
8. red pen
9. blue pen
10. eraser tool--small circle, small eraser, big circle big eraser
11. Clear screen
12. always show toolbars
13. closes the drawing toolbar
14. add text
15. redo

The functions are the same except the mouse is only available in annotation mode

When annotation mode is selected your desktop is shown. You can highlight, write on, surf the web, etc.....



In whiteboard mode your screen becomes a blank white screen where you can use the pen to write and draw. You can also add shapes and type text. Your cursor for your keyboard is not available in this mode.

